

Triangle apartments

2004

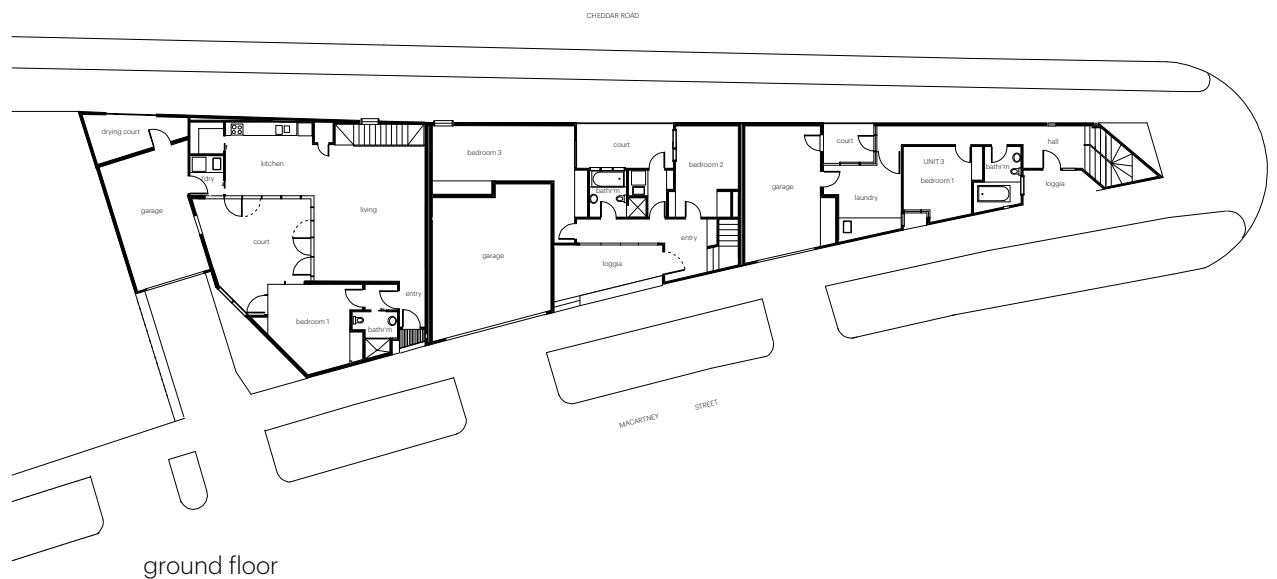
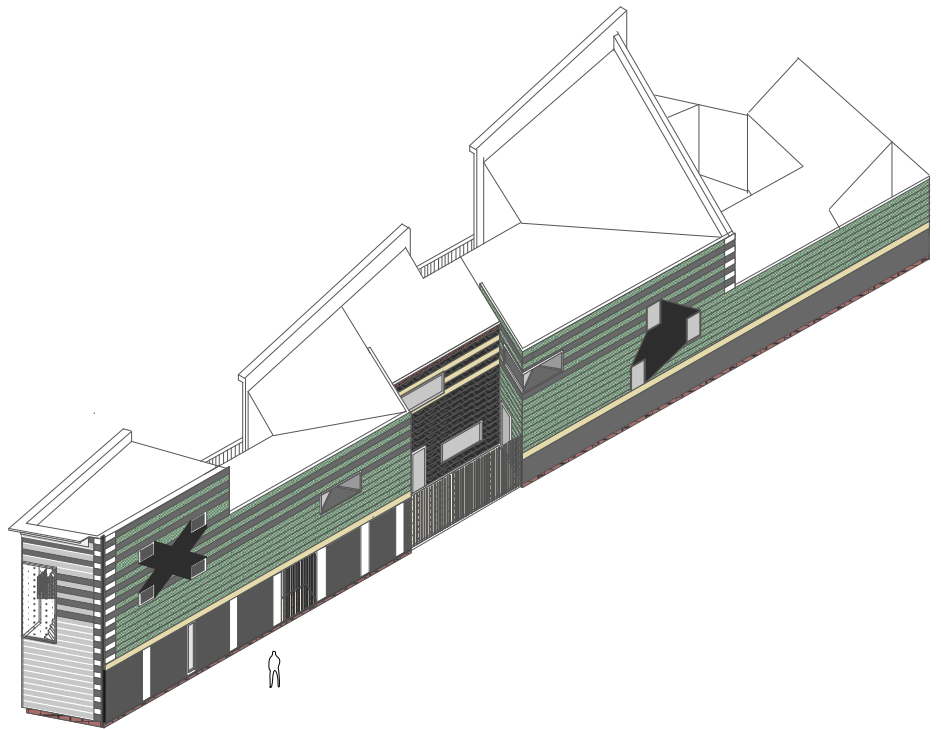
-

Reservoir, Victoria
Status - Project

The development is located on a triangular site at the intersection of two oblique major thoroughfares, in a semi industrial area. The project was a testing model for confined sites, requiring rigorous and innovative planning.

Inspired by highway architecture, the building is conceived as a monolithic steel shed, occupying the entire site and manipulated volumetrically and graphically to achieve outcomes which are relevant to the movement of motorists.

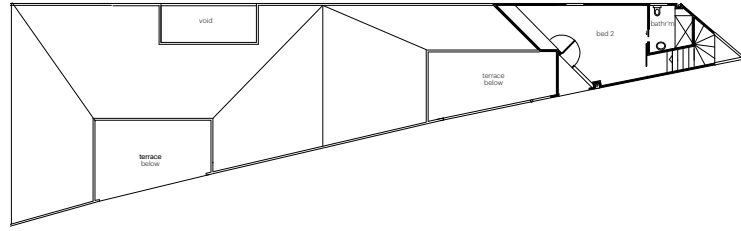
Three slices across the site determines the boundaries of each of the three apartments, with each located on multiple levels with it's own internal staircase. A glazed courtyard contained within the building facade is incorporated in



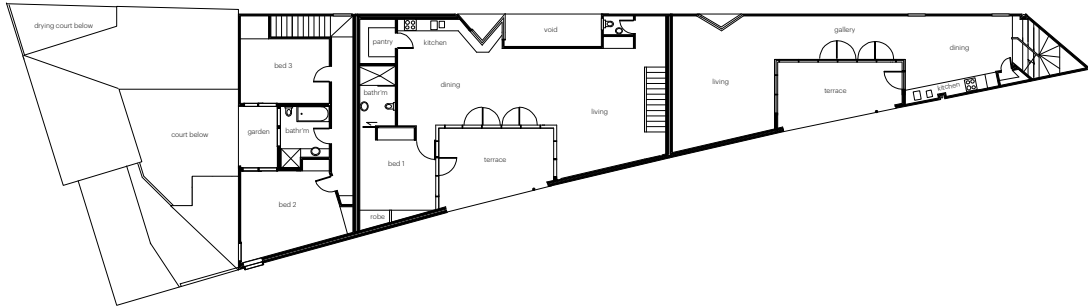
each apartment. The interior spaces are arranged between the courtyard and the site boundaries in an open plan arrangement. The rectilinear geometry of these courtyards offsets the geometry of the spaces which aligned with the site boundary.

A planning permit was obtained for this project with the support of the local council. Unfortunately the project was not realized in its current form as the client on-sold the site prior to construction.

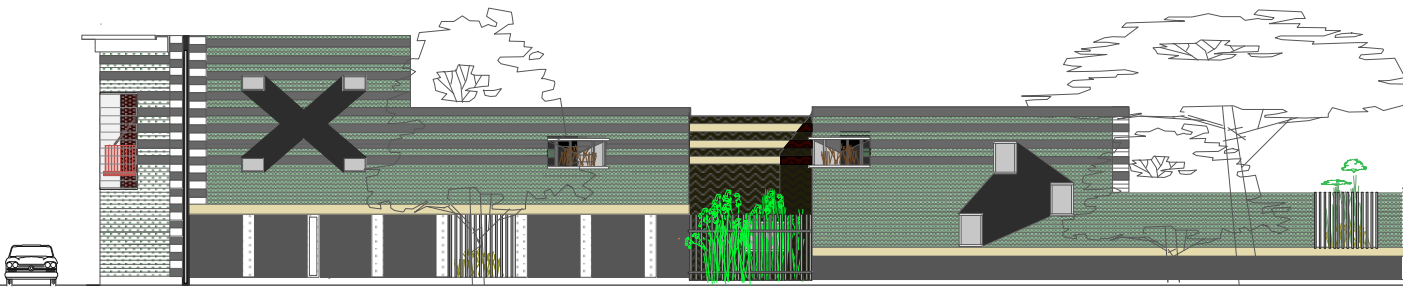
<http://www.sharifabraham.com>



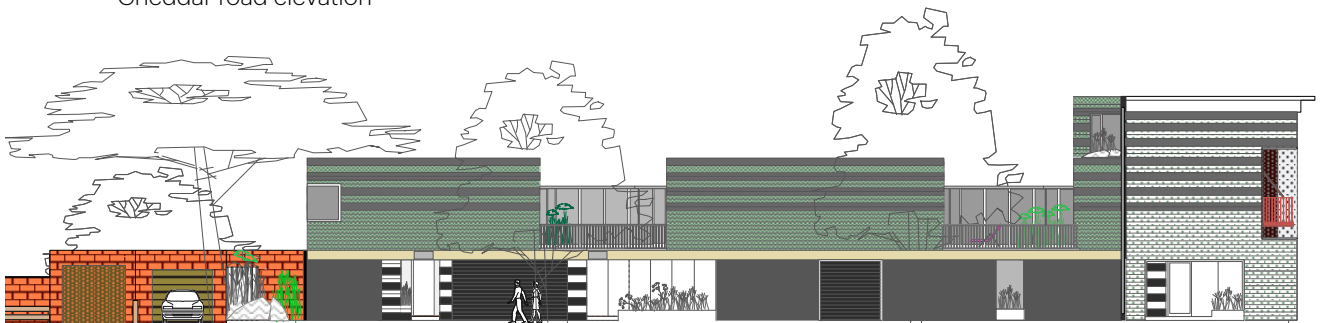
second floor



first floor



Cheddar road elevation



Mc Artney Street elevation