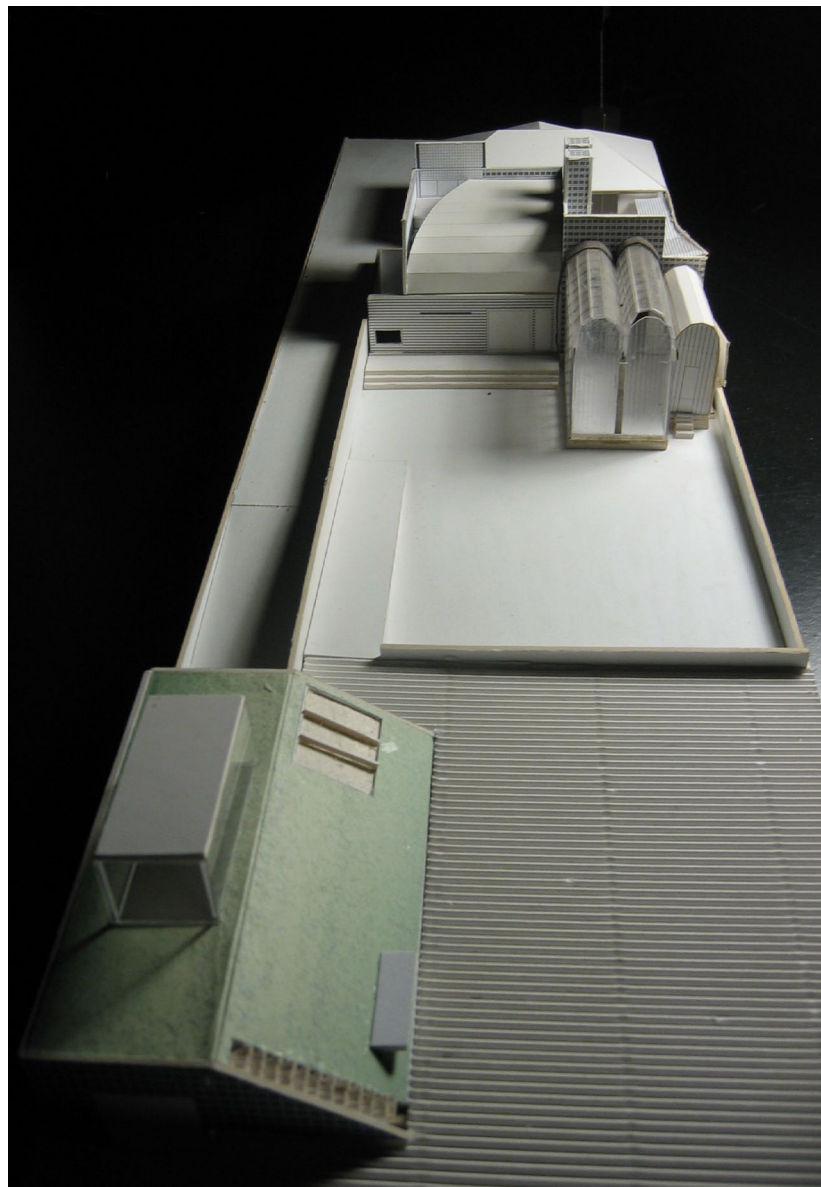


## Point Leo House

2003

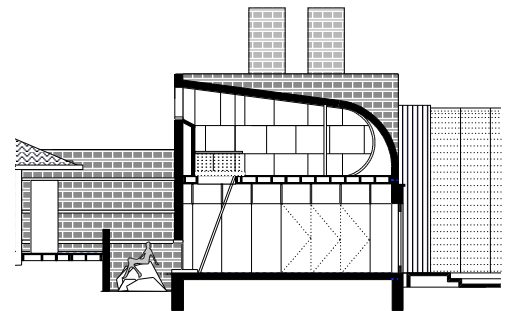
-

Point Leo, Victoria  
Status - construction soon



### Architects

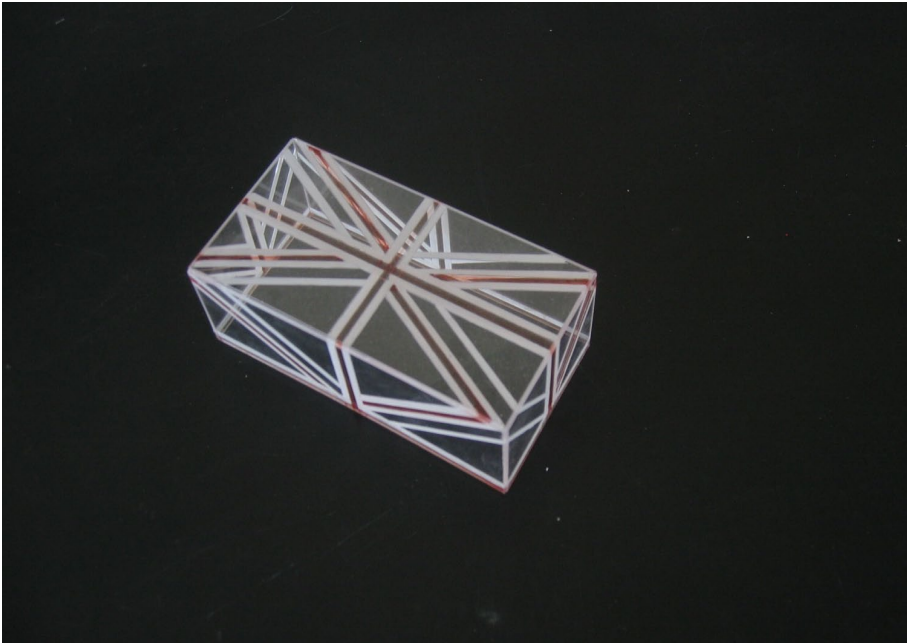
Level 1/358 Lonsdale st,  
Melbourne, 3000  
Australia



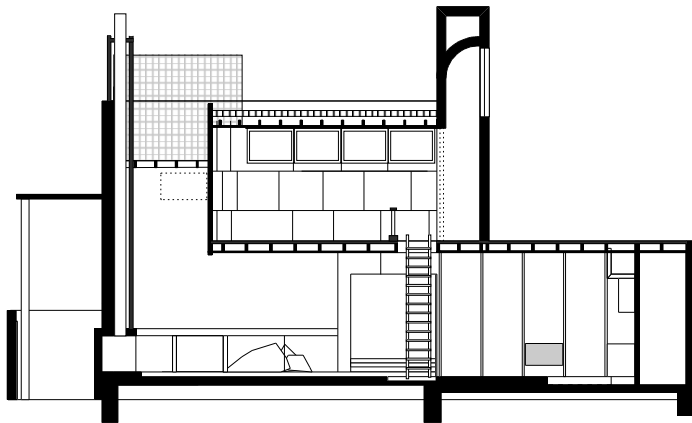
The site is located near the foreshore adjacent to the Point Leo Surf life saving club on Victoria's Mornington Peninsula. The existing dwelling built in the 50s was retained at the client's request and an extension of equal size was proposed. Beyond its obvious proximity to the beach the site did not possess any interesting outlooks to the surrounding landscape or the sea. Consequently our interest focused on the possibility of exploring a spacial engagement with the landscape, which was independent of the surroundings.

The idea was to propose a notion of house as "archaeological object". Exploring living relationships with subterranean spaces.

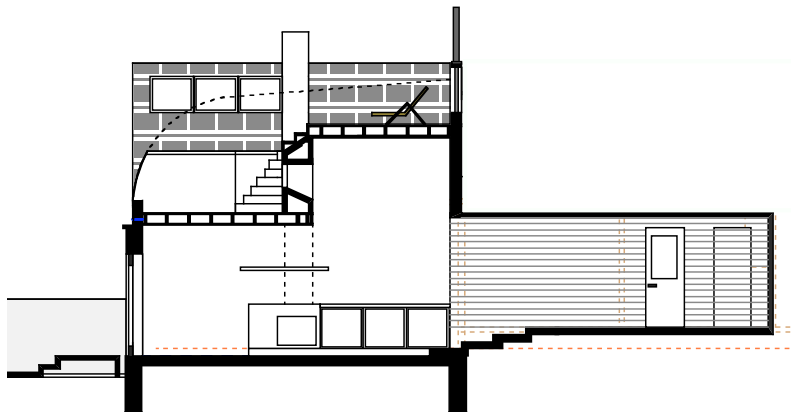
A large rectangular cut out to the depth of 1.2 metres was made on the site, creating a submerged platform in which to locate the new addition. Conceived as a two story structure of concrete grid frame and dry-stone infill and of materiality and form suggesting an archaeological find (perhaps one preexisting the original house), the addition established a compelling relationship with the site. It engaged directly with the "physicality" of its earth.



Model- studio atrium



Section living



Section roof deck

A grass roofed studio was located at the rear of the site. It is connected to the house via a large ramp. An atrium, geometrically modelled on the configuration of the "union Jack", provides the only form of natural light to its interior. At night the artificial light from this interior makes the structure a beacon of colour and geometry, engaging the surroundings area with the house, the land and the site itself.

The design is currently being developed for the commencement of construction.

<http://www.sharifabraham.com>

